

Leroy Van Allen
P.O. Box 196
Sidney, OH 45365
e-mail: vams@woh.rr.com

June 21, 2015

[REDACTED]
[REDACTED]
Hi Mr. Whitehead:

Enclosed are your ten **1881 O** Morgan dollars you sent to me for examination plus computer prints of photographs of new/revised varieties taken with a digital camera thru a stereo microscope. Sorry for delay in getting coins back to you-- was tied up for sometime with article on 1898 O VAM 20 large over small date. Couple rather minor *new* die varieties and lots of die markers! Nothing significant to list for reverses.

My comments on the coins are as follows:

PCGS 4125290– VAM 28 *revised*. Has slightly dbl Liberty head profile and cap top of VAM 28. Revised to make this Die 1 with die marker of scratch behind eye. Original photo of VAM 28 dbl profile in Dec 97- May 99 VAM Supplement not clear enough to compare.

PCGS 171159– VAM 54. Listed in Apr 2015. Same die markers of diagonal line in space between wheat leaf & left cotton leaf. Same notch bottom of rt 1. Added thread-like die impression on lower leaf cluster of rt wreath.

PCG 8627 & 2657. Same obv & rev dies as 171159. Used 2657 for photo however, since was clearer.

PCGS 9005644– VAM 28 *revised*. Die 2 obv. Slightly dbl Liberty head profile and cap top. Die marker of diagonal die scratch below rt rear of cap.

PCGS 141046– VAM 1A. Doesn't have die scratch lines below God of VAM 19. No dbl profile, cap top or date. Nothing significant to list. Just spike in top left inside of top loop of left 8 of VAM 1A.

PCGS 4127031– *New* VAMs 55 & 55A. Unlisted dbl rt 1 at top and lower rt of shaft plus unlisted clashed n.

PCGS 4127030– VAM 24 *revised*. Notch at lower left side of rt 1 vertical shaft. Made this Die 1 with spike at upper left inside of left 8 top loop and added die marker.

PCGS 140642– *New* VAM 56. Yes, has unlisted notch at lower rt of rt 1 vertical shaft. No spikes in 8 top loops.

Pretty toning on rt obv!


PCGS 909784– VAM 24. Yes, has notch of lower left side of rt 1 vertical shaft with spike upper left inside of left 8 top loop. Different dies than coin 4127030. But couldn't see any clear die markers to use on this coin because of dark toning & slight coin wear, so pass on listing it.

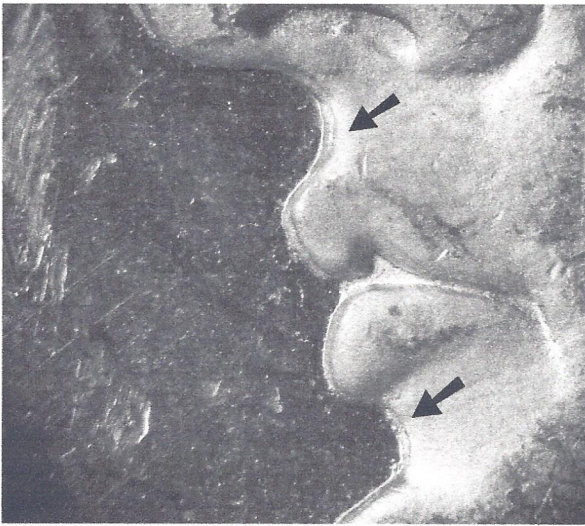
The descriptions of the new/revised die varieties listings are as follows:

1881 O

- | | | | | |
|-------------|---|-----|-----|-----|
| 24(revised) | III ² 14 • C ³ a (Doubled Right 1) | (?) | I-2 | R-5 |
| | Obverse III ² 14– Die 1– Right 1 doubled as notch at lower left side of vertical shaft. <i>Die marker</i> - Short vertical die scratch at top right of top cotton leaf. | | | |
| 28(revised) | III ² 17 • C ³ a (Doubled Profile & Cap Top) | (?) | I-2 | R-5 |
| | Obverse III ² 17– Die 1– Slightly doubled profile from forehead down to chin. Phrygian cap weakly doubled at top edge. Die chip at top left inside of upper loop of both 8's. <i>Die marker</i> - Die scratch back of eye at hair edge.
Die 2- Die chip at top left inside of left 8 upper loop. <i>Die marker</i> - Diagonal die scratch below right rear of Phrygian cap. | | | |
| 55 | III ² 36 • C ³ a (Doubled Right 1 Top & Right Side) | (?) | I-2 | R-5 |
| | Obverse III ² 36– Slightly doubled right 1 at top and lower right of vertical shaft as a notch. <i>Die marker</i> - Single diagonal polishing line at bottom of Y in LIBERTY. | | | |
| 55A | III ² 36 • C ³ a (Doubled Right 1 Top & Right Side, Clashed Obverse n) | (?) | I-2 | R-5 |
| | Obverse III ² 36– Clashed die with partial incuse n of In from reverse showing next to Liberty head neck. | | | |
| 56 | III ² 37 • C ³ 1 (Doubled Right 1 Lower Right) | (?) | I-2 | R-5 |
| | Obverse III ² 37– Right 1 slightly doubled as notch at lower right of vertical shaft. <i>Die marker</i> - Short diagonal die scratch in front of eyelash. | | | |

Thanks for sharing your varieties!

Yours truly,

Leroy Van Allen



1881 O VAM 28 Doubled Profile



1881 O VAM 28 Die 1. Die marker- Die Scratch Hair Edge



1881 O VAM 28 Die 2. Die marker- Die Scratch Below Cap Rear



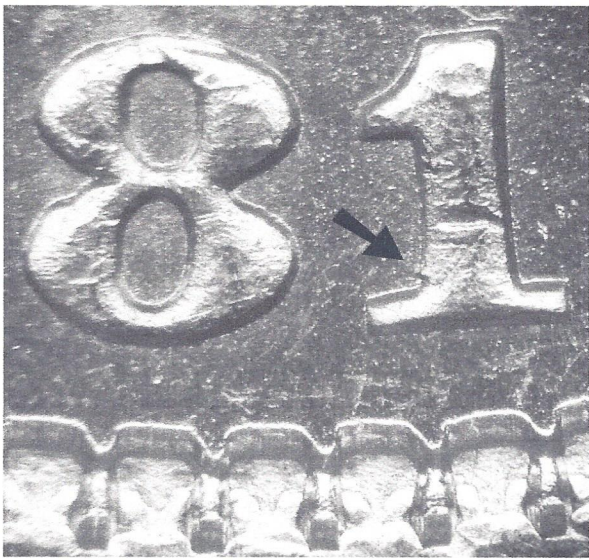
1881 O VAM 54 Thread-Like Die Impressions Leaves



1881 O VAM 55 Doubled Right 1 Top & Notch



1881 O VAM 55 Die marker- Diagonal Polishing Line Y Bottom



1881 O VAM 24 Doubled Right 1 Left Side Notch



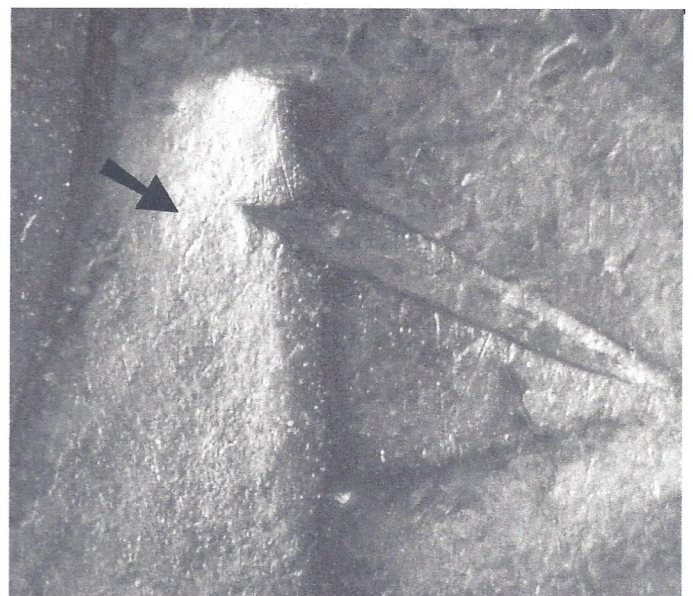
1881 O VAM 24 Die 1 Die marker- Vertical Die Scratch Top Cotton Leaf



1881 O VAM 55A Clashed Obverse n



1881 O VAM 56 Doubled Right 1 Right Side Notch



1881 O VAM 56 Die marker- Diagonal Die Scratch Eye Front